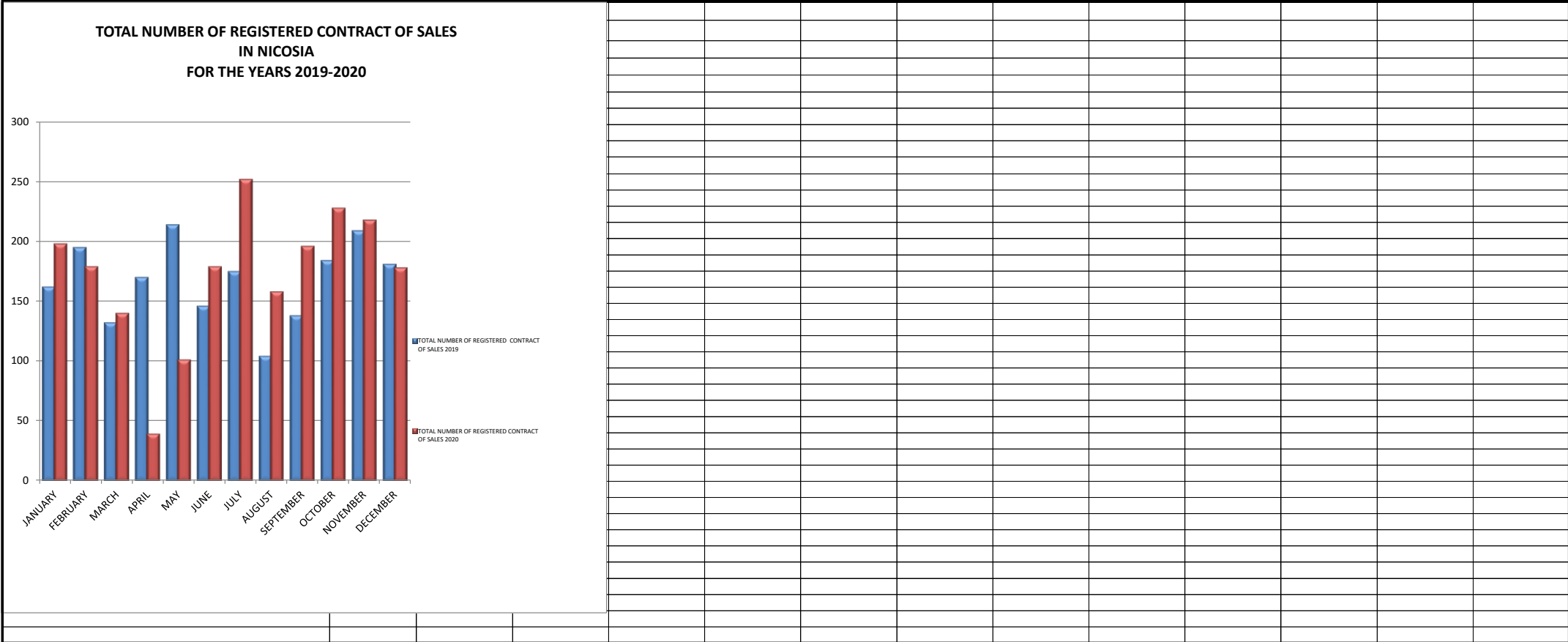


DEPARTMENT OF LANDS AND SURVEYS

TOTAL NUMBER OF REGISTERED CONTRACT OF SALES AT D.L.O. NICOSIA FOR THE YEARS 2019-2020

MONTH	JANUARY	FEBRUARY	MARCH	APRIL	MAY	JUNE	JULY	AUGUST	SEPTEMBER	OCTOBER	NOVEMBER	DECEMBER	TOTAL
TOTAL NUMBER OF REGISTERED CONTRACT OF SALES 2019	161	194	131	169	213	145	174	103	137	183	208	180	1998
TOTAL NUMBER OF REGISTERED CONTRACT OF SALES 2020	197	178	139	38	100	178	251	157	195	227	217	177	2054
PERCENTAGE OF DECREASE / INCREASE:	22%	-8%	6%	-78%	-53%	23%	44%	52%	42%	24%	4%	-2%	3%

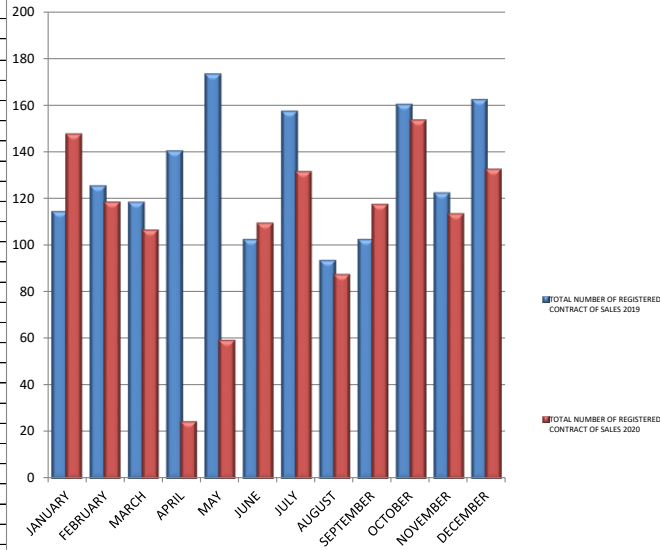


DEPARTMENT OF LANDS AND SURVEYS

TOTAL NUMBER OF REGISTERED CONTRACT OF SALES AT D.L.O. LARNACA FOR THE YEARS 2019-2020

MONTH	JANUARY	FEBRUARY	MARCH	APRIL	MAY	JUNE	JULY	AUGUST	SEPTEMBER	OCTOBER	NOVEMBER	DECEMBER	TOTAL
TOTAL NUMBER OF REGISTERED CONTRACT OF SALES 2019	114	125	118	140	173	102	157	93	102	160	122	162	1568
TOTAL NUMBER OF REGISTERED CONTRACT OF SALES 2020	147	118	106	24	59	109	131	87	117	153	113	132	1296
PERCENTAGE OF DECREASE / INCREASE:	29%	-6%	-10%	-83%	-66%	7%	-17%	-6%	15%	-4%	-7%	-19%	-17%

TOTAL NUMBER OF REGISTERED CONTRACT OF SALES IN LARNACA FOR THE YEARS 2019-2020



DEPARTMENT OF LANDS AND SURVEYS

TOTAL NUMBER OF REGISTERED CONTRACT OF SALES AT D.L.O. FAMAGUSTA FOR THE YEARS 2019-2020

MONTH	JANUARY	FEBRUARY	MARCH	APRIL	MAY	JUNE	JULY	AUGUST	SEPTEMBER	OCTOBER	NOVEMBER	DECEMBER	TOTAL
TOTAL NUMBER OF REGISTERED CONTRACT OF SALES 2019	53	48	45	96	87	43	49	30	40	50	48	64	653
TOTAL NUMBER OF REGISTERED CONTRACT OF SALES 2020	50	47	41	10	28	56	60	39	59	80	51	63	584
PERCENTAGE OF DECREASE / INCREASE:	-6%	-2%	-9%	-90%	-68%	30%	22%	30%	48%	60%	6%	-2%	-11%



DEPARTMENT OF LANDS AND SURVEYS

TOTAL NUMBER OF REGISTERED CONTRACT OF SALES AT D.L.O. PAPHOS FOR THE YEARS 2019-2020

MONTH	JANUARY	FEBRUARY	MARCH	APRIL	MAY	JUNE	JULY	AUGUST	SEPTEMBER	OCTOBER	NOVEMBER	DECEMBER	TOTAL
TOTAL NUMBER OF REGISTERED CONTRACT OF SALES 2019	187	211	185	224	404	205	230	166	173	192	233	220	2630
TOTAL NUMBER OF REGISTERED CONTRACT OF SALES 2020	168	171	81	72	120	101	129	85	162	202	115	148	1554
PERCENTAGE OF DECREASE / INCREASE:	-10%	-19%	-56%	-68%	-70%	-51%	-44%	-49%	-6%	5%	-51%	-33%	-41%

