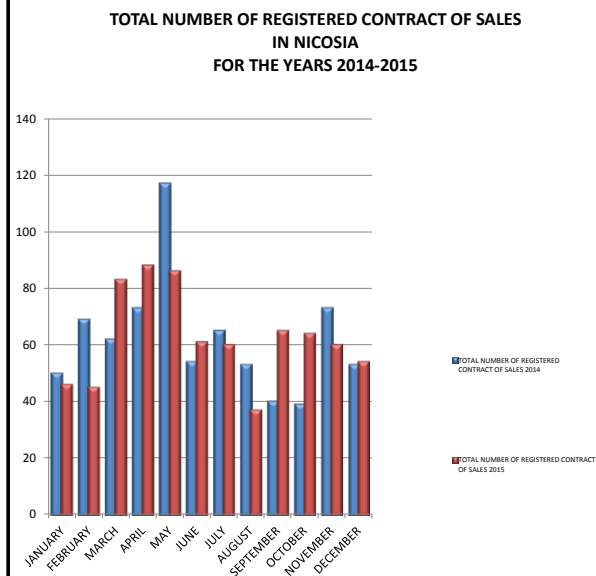


DEPARTMENT OF LANDS AND SURVEYS

TOTAL NUMBER OF REGISTERED CONTRACT OF SALES AT D.L.O. NICOSIA FOR THE YEARS 2014-2015

MONTH	JANUARY	FEBRUARY	MARCH	APRIL	MAY	JUNE	JULY	AUGUST	SEPTEMBER	OCTOBER	NOVEMBER	DECEMBER	TOTAL
TOTAL NUMBER OF REGISTERED CONTRACT OF SALES 2014	50	69	62	73	117	54	65	53	40	39	73	53	748
TOTAL NUMBER OF REGISTERED CONTRACT OF SALES 2015	46	45	83	88	86	61	60	37	65	64	60	54	749

MONTH	JANUARY	FEBRUARY	MARCH	APRIL	MAY	JUNE	JULY	AUGUST	SEPTEMBER	OCTOBER	NOVEMBER	DECEMBER	TOTAL
PERCENTAGE OF DECREASE / INCREASE:	-8%	-35%	34%	21%	-26%	13%	-8%	-30%	63%	64%	-18%	2%	0%



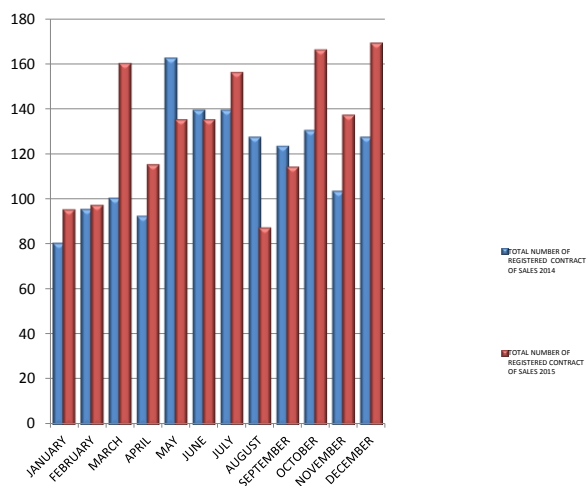
DEPARTMENT OF LANDS AND SURVEYS

TOTAL NUMBER OF REGISTERED CONTRACT OF SALES AT D.L.O. LIMASSOL FOR THE YEARS 2014-2015

MONTH	JANUARY	FEBRUARY	MARCH	APRIL	MAY	JUNE	JULY	AUGUST	SEPTEMBER	OCTOBER	NOVEMBER	DECEMBER	TOTAL
TOTAL NUMBER OF REGISTERED CONTRACT OF SALES 2014	80	95	100	92	162	139	139	127	123	130	103	127	1417
TOTAL NUMBER OF REGISTERED CONTRACT OF SALES 2015	95	97	160	115	135	135	156	87	114	166	137	169	1566

MONTH	JANUARY	FEBRUARY	MARCH	APRIL	MAY	JUNE	JULY	AUGUST	SEPTEMBER	OCTOBER	NOVEMBER	DECEMBER	TOTAL
PERCENTAGE OF DECREASE / INCREASE:	19%	2%	60%	25%	-17%	-3%	12%	-31%	-7%	28%	33%	33%	11%

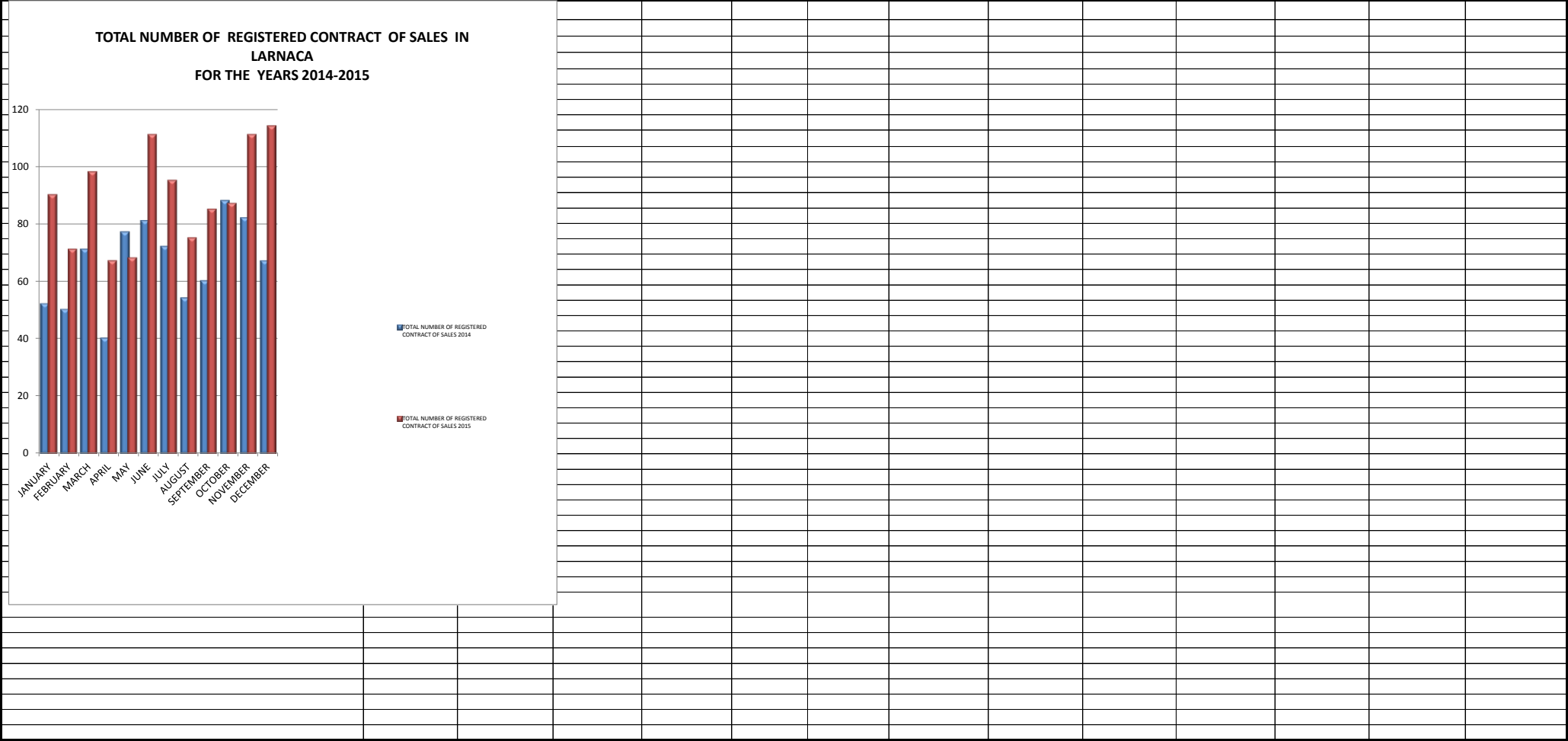
TOTAL NUMBER OF REGISTERED CONTRACT OF SALES IN LIMASSOL FOR THE YEARS 2014-2015



DEPARTMENT OF LANDS AND SURVEYS

TOTAL NUMBER OF REGISTERED CONTRACT OF SALES AT D.L.O. LARNACA FOR THE YEARS 2014-2015

MONTH	JANUARY	FEBRUARY	MARCH	APRIL	MAY	JUNE	JULY	AUGUST	SEPTEMBER	OCTOBER	NOVEMBER	DECEMBER	TOTAL
TOTAL NUMBER OF REGISTERED CONTRACT OF SALES 2014	52	50	71	40	77	81	72	54	60	88	82	67	794
TOTAL NUMBER OF REGISTERED CONTRACT OF SALES 2015	90	71	98	67	68	111	95	75	85	87	111	114	1072
MONTH	JANUARY	FEBRUARY	MARCH	APRIL	MAY	JUNE	JULY	AUGUST	SEPTEMBER	OCTOBER	NOVEMBER	DECEMBER	TOTAL
PERCENTAGE OF DECREASE / INCREASE:	73%	42%	38%	68%	-12%	37%	32%	39%	42%	-1%	35%	70%	35%

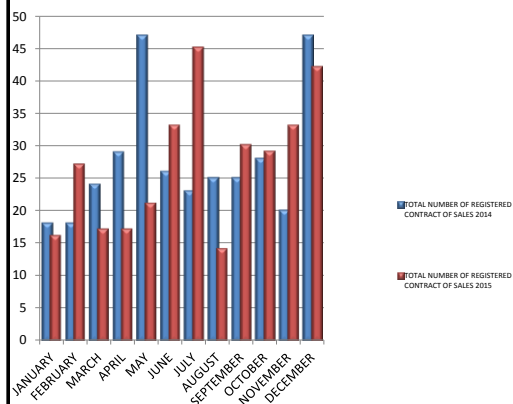


DEPARTMENT OF LANDS AND SURVEYS

TOTAL NUMBER OF REGISTERED CONTRACT OF SALES AT D.L.O. FAMAGUSTA FOR THE YEARS 2014-2015

MONTH	JANUARY	FEBRUARY	MARCH	APRIL	MAY	JUNE	JULY	AUGUST	SEPTEMBER	OCTOBER	NOVEMBER	DECEMBER	TOTAL
TOTAL NUMBER OF REGISTERED CONTRACT OF SALES 2014	18	18	24	29	47	26	23	25	25	28	20	47	330
TOTAL NUMBER OF REGISTERED CONTRACT OF SALES 2015	16	27	17	17	21	33	45	14	30	29	33	42	324
MONTH	JANUARY	FEBRUARY	MARCH	APRIL	MAY	JUNE	JULY	AUGUST	SEPTEMBER	OCTOBER	NOVEMBER	DECEMBER	TOTAL
PERCENTAGE OF DECREASE / INCREASE:	-11%	50%	-29%	-41%	-55%	27%	96%	-44%	20%	4%	65%	-11%	-2%

**TOTAL NUMBER OF REGISTERED CONTRACT OF SALES
IN FAMAGUSTA
FOR THE YEARS 2014-2015**



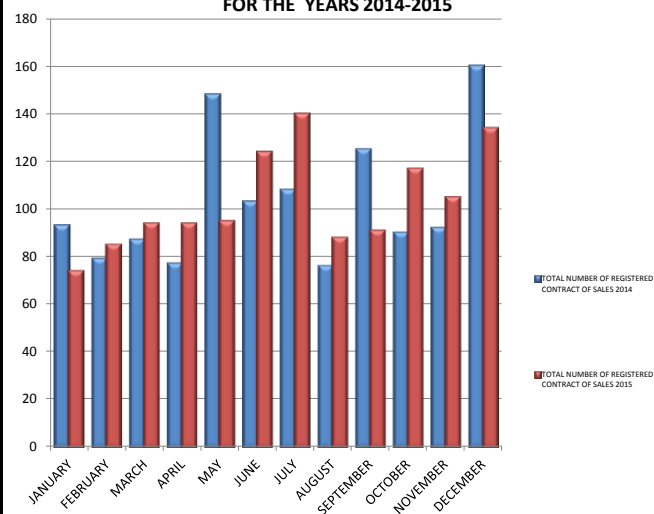
DEPARTMENT OF LANDS AND SURVEYS

TOTAL NUMBER OF REGISTERED CONTRACT OF SALES AT D.L.O. PAPHOS FOR THE YEARS 2014-2015

<u>MONTH</u>	<u>JANUARY</u>	<u>FEBRUARY</u>	<u>MARCH</u>	<u>APRIL</u>	<u>MAY</u>	<u>JUNE</u>	<u>JULY</u>	<u>AUGUST</u>	<u>SEPTEMBER</u>	<u>OCTOBER</u>	<u>NOVEMBER</u>	<u>DECEMBER</u>	<u>TOTAL</u>
TOTAL NUMBER OF REGISTERED CONTRACT OF SALES 2014	93	79	87	77	148	103	108	76	125	90	92	160	1238
TOTAL NUMBER OF REGISTERED CONTRACT OF SALES 2015	74	85	94	94	95	124	140	88	91	117	105	134	1241

<u>MONTH</u>	<u>JANUARY</u>	<u>FEBRUARY</u>	<u>MARCH</u>	<u>APRIL</u>	<u>MAY</u>	<u>JUNE</u>	<u>JULY</u>	<u>AUGUST</u>	<u>SEPTEMBER</u>	<u>OCTOBER</u>	<u>NOVEMBER</u>	<u>DECEMBER</u>	<u>TOTAL</u>
PERCENTAGE OF DECREASE / INCREASE:	-20%	8%	8%	22%	-36%	20%	30%	16%	-27%	30%	14%	-16%	0%

**TOTAL NUMBER OF REGISTERED CONTRACT OF SALES
IN PAPHOS
FOR THE YEARS 2014-2015**



DEPARTMENT OF LANDS AND SURVEYS

PANCYPRIAN TOTAL NUMBER OF REGISTERED CONTRACT OF SALES FOR THE YEARS 2014-2015

<u>MONTH</u>	<u>JANUARY</u>	<u>FEBRUARY</u>	<u>MARCH</u>	<u>APRIL</u>	<u>MAY</u>	<u>JUNE</u>	<u>JULY</u>	<u>AUGUST</u>	<u>SEPTEMBER</u>	<u>OCTOBER</u>	<u>NOVEMBER</u>	<u>DECEMBER</u>	<u>TOTAL</u>
TOTAL NUMBER OF REGISTERED CONTRACT OF SALES 2014	293	311	344	311	551	403	407	335	373	375	370	454	4527
TOTAL NUMBER OF REGISTERED CONTRACT OF SALES 2015	321	325	452	381	405	464	496	301	385	463	446	513	4952
<u>MONTH</u>	<u>JANUARY</u>	<u>FEBRUARY</u>	<u>MARCH</u>	<u>APRIL</u>	<u>MAY</u>	<u>JUNE</u>	<u>JULY</u>	<u>AUGUST</u>	<u>SEPTEMBER</u>	<u>OCTOBER</u>	<u>NOVEMBER</u>	<u>DECEMBER</u>	<u>TOTAL</u>
PERCENTAGE OF DECREASE / INCREASE :	10%	5%	31%	23%	-26%	15%	22%	-10%	3%	23%	21%	13%	9%

**PANCYPRIAN TOTAL NUMBER OF THE CONTRACT OF SALES
FOR THE YEARS 2014-2015**

